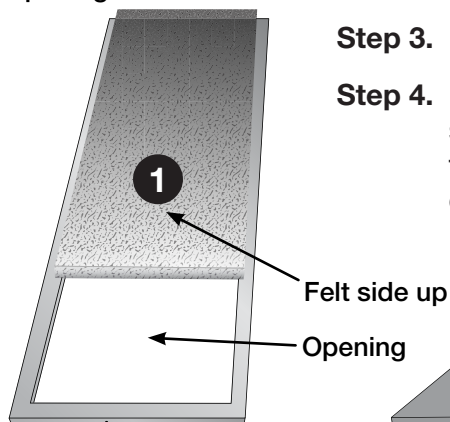


# DF-30 Filter Installation Instructions

FILTRATION SYSTEM

## Baffle Filter

(3x) Alternate felt and opening as shown.

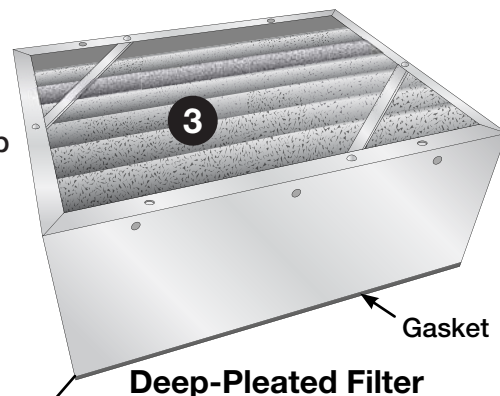


**Step 1.** Remove the four thumbscrews by turning them counter clockwise.

**Step 2.** Remove the Front Panel.

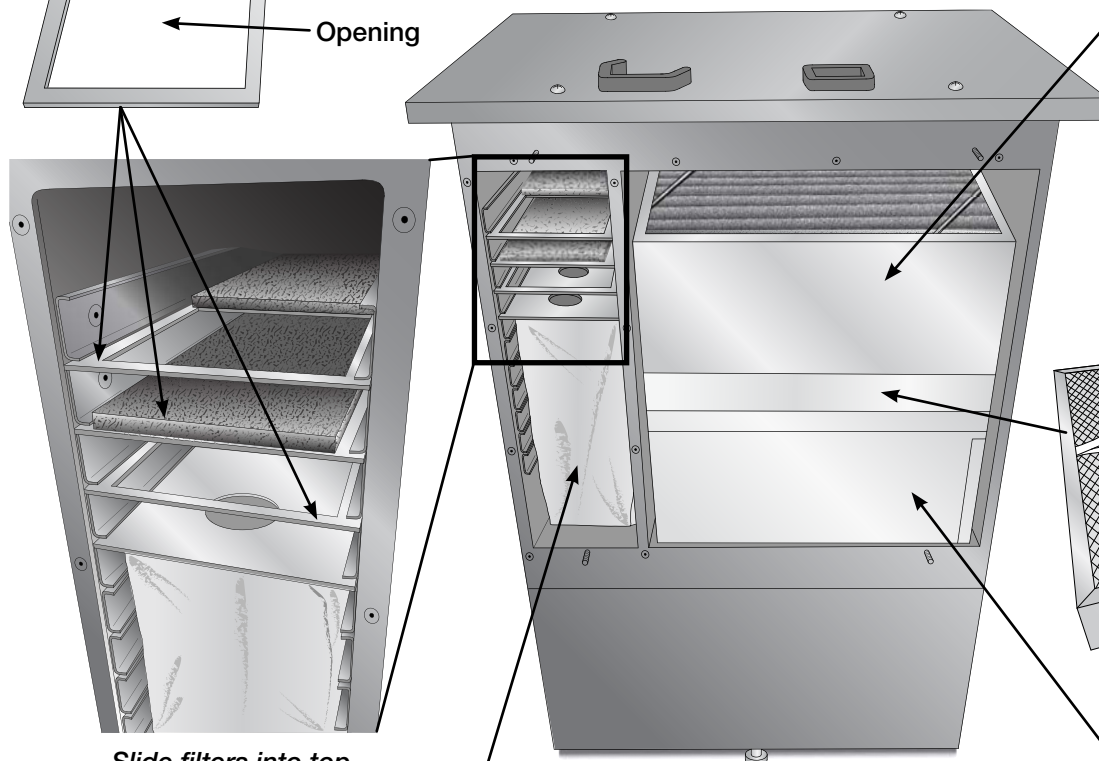
**Step 3.** Install filters 1 through 5 as shown.

**Step 4.** Replace the front panel. Tighten the thumb screws by turning them clockwise. After tightening the last thumbscrew double-check tightness on all thumbscrews.



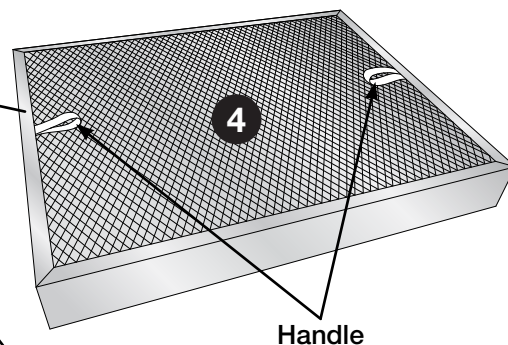
**Deep-Pleated Filter**

*Stack filters on top of each other with the handles facing up or the gaskets facing down.*



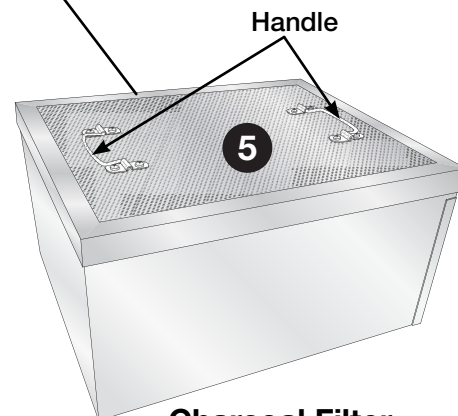
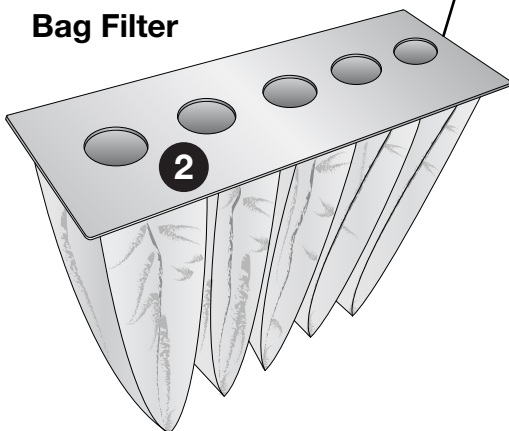
*Slide filters into top four narrow slots.*

**HEPA Filter**



**Handle**

**Bag Filter**



**Charcoal Filter**

**Caution!**  
This filter is very heavy.