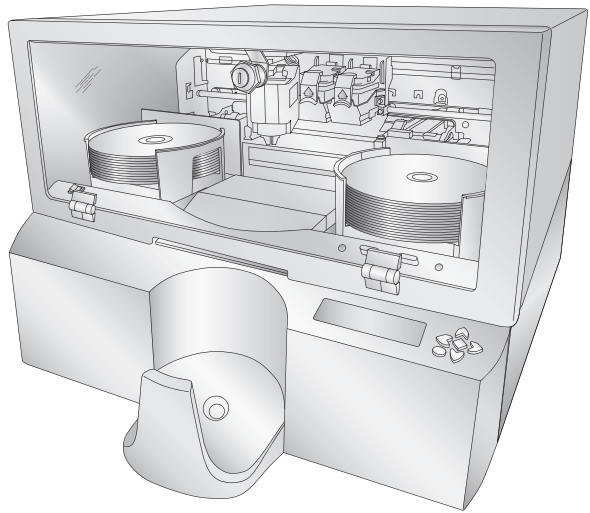




**DP-XR<sub>n</sub>**  
NETWORK DISC PUBLISHER

**Network Disc  
Duplication & Printing System**



**USER'S MANUAL**

**Notices:** The information in this document is subject to change without notice. NO WARRANTY OF ANY KIND IS MADE WITH REGARD TO THIS MATERIAL, INCLUDING, BUT NOT LIMITED TO, THE IMPLIED WARRANTIES OF MERCHANTABILITY AND FITNESS FOR A PARTICULAR PURPOSE. No liability is assumed for errors contained herein or for incidental or consequential damages in connection with the furnishing, performance, or use of this material. This document contains proprietary information that is protected by copyright. All rights are reserved. No part of this document may be photocopied, reproduced, or translated into another language without prior written consent.

**Trademark Acknowledgments:** Windows is a registered trademark of Microsoft Corporation. All other trademarks are the property of their respective owners.

## Printing History

Edition 1.0, #061507, Copyright 2007, All rights reserved.

**FCC Compliance Statement:** This device complies with part 15 of the FCC rules. Operation is subject to the following two conditions: (1) this device may not cause harmful interference, and (2) this device must accept any interference received, including interference that may cause undesired operation.

**For Users in the United States:** This product is intended to be supplied by a UL listed Direct Plug-In Power Supply marked "Class 2" or a UL listed ITE Power Supply marked "LPS" with output rated 12VDC, 4.5A or higher. This equipment has been tested and found to comply with the limits for a Class A digital device, pursuant to Part 15 of the FCC Rules. In a domestic environment this product may cause radio interference, in which case the user may be required to take adequate measures. This equipment generates, uses, and can radiate radio frequency energy and, if not installed and used in accordance with the instructions, may cause harmful interference to radio communications. However, there is no guarantee that interference will not occur in a particular installation. If this equipment does cause harmful interference to radio or television reception, which can be determined by turning the equipment off and on, the user is encouraged to try to correct the interference by one or more of the following measures:

- Re-orient or relocate the receiving antenna.
- Increase the separation between the equipment and receiver.
- Connect the equipment into an outlet on a circuit different from that to which the receiver is connected.
- Consult the dealer or an experienced radio/TV technician for help.

Use of shielded cables is required to comply with the Class A limits of Part 15 of the FCC Rules. You are cautioned that any changes or modifications not expressly approved in this manual could void your authority to operate and/or obtain warranty service for this equipment.

**For Users in Canada:** This digital apparatus does not exceed the Class A limits for radio noise for digital apparatus set out on the Radio Interference Regulations of the Canadian Department of Communications. Le présent appareil numérique n'émet pas de bruits radioélectriques dépassant les limites applicables aux appareils numériques de la classe A prescrites dans le Règlement sur le brouillage radioélectrique édicté par le ministère des Communications du Canada.

## CAUTION!

**TO PREVENT FIRE OR SHOCK HAZARD, DO NOT EXPOSE THE UNIT TO RAIN OR MOISTURE. TO REDUCE THE RISK OF ELECTRIC SHOCK, DO NOT REMOVE EXTERIOR PANELS. NO USER-SERVICEABLE PARTS INSIDE. REFER SERVICING TO QUALIFIED SERVICE PERSONNEL. OPERATE THE UNIT WITH ONLY THE PROPER ELECTRICAL SPECIFICATIONS AS LABELED ON THE PRINTER AND AC ADAPTER.**

## CAUTION!

**THIS PRODUCT CONTAINS A LASER DIODE OF A HIGHER CLASS THAN 1. TO ENSURE CONTINUED SAFETY, DO NOT REMOVE ANY COVERS OR ATTEMPT TO GAIN ACCESS TO THE INSIDE OF THIS PRODUCT. REFER ALL SERVICING TO QUALIFIED PERSONNEL. THE FOLLOWING LABEL APPEARS INSIDE YOUR UNIT:  
CLASS 1 LASER PRODUCT LASER KLASSE 1**

## CAUTION!

**USE OF CONTROLS OR ADJUSTMENTS OR PERFORMANCE OF PROCEDURES OTHER THAN THOSE SPECIFIED HEREIN MAY RESULT IN HAZARDOUS RADIATION.**

# Table of Contents

<b>Section 1: Getting Started.....</b>	<b>1</b>
A. Choosing a Good Location .....	1
B. Unpacking and Inspection.....	2
C. Identifying the Parts.....	3
<b>Section 2: Hardware and Software Set-Up .....</b>	<b>6</b>
A. Hardware Setup .....	6
Step 1: Applying Power .....	6
Step 2: Installing Ink Cartridges .....	6
Step 3: Loading Media .....	7
Step 4: Connecting the Ethernet Cable .....	8
B. Install the PTPublisher Client Software .....	9
C. Installing the Administrator Utility .....	9
D. Configuring your Network .....	9
<b>Section 3: Sending Jobs to the XRn.....</b>	<b>11</b>
A. Tutorial: Copy a CD or DVD .....	11
B. Using PTPublisher .....	16
C. Creating a Print Label Using SureThing .....	18
D. Using Other Graphics Programs .....	20
E. Archiving Jobs on the XRn .....	20
<b>Section 4: Administrator Utility and Advanced Functions .....</b>	<b>24</b>
A. Administrator Utility.....	24
B. Advanced Printer Driver Settings .....	29
C. LCD Control Panel Operation .....	36
<b>Section 5: Maintenance and Troubleshooting.....</b>	<b>41</b>
A. LCD Error Messages.....	41
B. Cleaning the XRn .....	42
C. Performing a Robotic Self-Test.....	42
D. Cleaning the Ink Cartridges .....	43
E. Technical Support .....	43
<b>Section 6: Technical Specifications.....</b>	<b>44</b>
<b>Index .....</b>	<b>45</b>



# Section 1: Getting Started

## THANK YOU...

...for purchasing the Disc Publisher XRn Network Publisher. XRn is the perfect all-in-one solution for producing professional looking CD, DVD, and Blu-ray (if equipped) discs in a networked

environment. A wide variety of disc formats are supported, including audio CDs, DVD video, data discs and more.

Operation is simple and completely automatic once a job has been submitted.

To begin using your XRn, please read this manual carefully. This Operator's Manual is a complete step-by-step guide to creating discs and administering your new XRn.

A separate in software Help file is provided that explains the operation of the PTPublisher client software. This is accessible via the software's help menu and the ? icon.

## Note on Terms and Convention

From this point forward, the following terms and conventions will apply:

The Disc Publisher XRn will be abbreviated simply as the "unit" or XRn. Optical discs, which can include many different types of discs including CD-Rs, CD-RWs, DVD+/-Rs Blu-ray and more are all referred to as discs. Please note that in order to copy and record Blu-ray discs, you will need to have purchased the Blu-ray version of the unit.

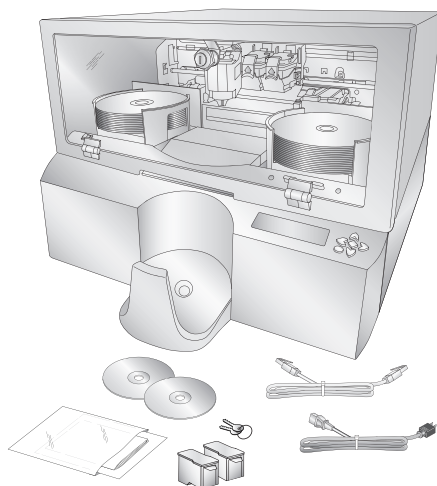
## A. CHOOSING A GOOD LOCATION

- Place the unit in a location with adequate air circulation to prevent internal heat build up.
- Do not place the XRn near heat sources such as radiators or air ducts, or in a place subject to direct sunlight, excessive dust, mechanical vibration or shock.

## B. UNPACKING AND INSPECTION

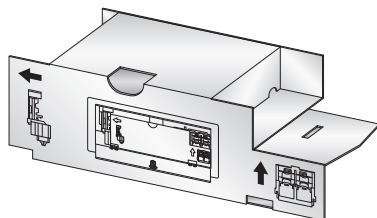
The following items are inside the box:

- Disc publisher XRn Network Publisher
- 2 Gray Plastic Input and Output Bins (Located inside cardboard insert)
- Power Cord
- One Three-Color (CMY) Ink Cartridge
- One Monochrome Black Ink Cartridge
- Client Installation Disc
- 7' Ethernet Cable
- Warranty Card
- 2 Keys
- The Operator's Manual, Quick Start Guide and Other Printed Information



Remove all packing tape from the unit. Open the front cover with the key provided and remove the cardboard insert by pulling on the right side first.

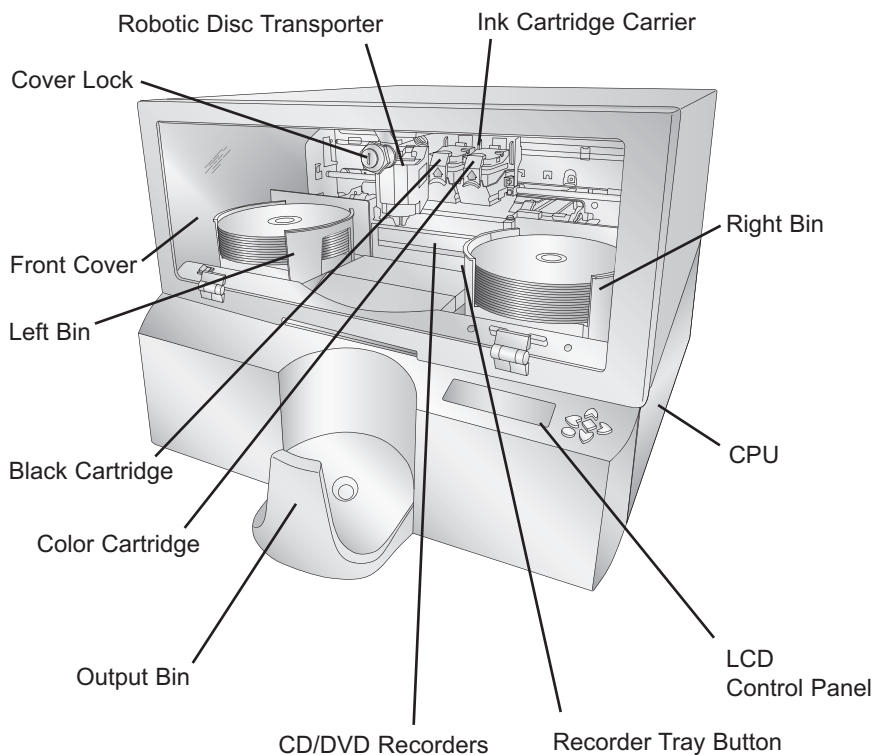
The cardboard insert (pictured to the right) prevents the cartridge carrier from damaging movement during shipment. Save the shipping box and packing materials.



They will come in handy later if you ever need to transport the unit.

## C. IDENTIFYING THE PARTS

This illustration shows the XRn and its components.



The **Robotic Disc Transporter** moves discs from the left or right Bin, to a CD/DVD Recorder, to the printer, and finally to the Output Bin.

The **CD/DVD Recorder** is automatically loaded and unloaded by the unit's Robotic Disc Transporter.

The **Recorder Tray Button** manually opens or closes the Recorder Tray. In normal operation, the in/out movement of the Recorder Tray is controlled automatically and this button is not used.

The **Left and Right Bins** are situated under the top cover of the unit. Each bin can hold up to 25 discs. You can designate the type of disc in each bin in the Administrator Utility (Section 4A).

The **Output bin** is located on the front of the unit. The output bin hold up to 50 discs.

The **Front Cover** is a durable plastic cover that will protect the unit from dust and interference.

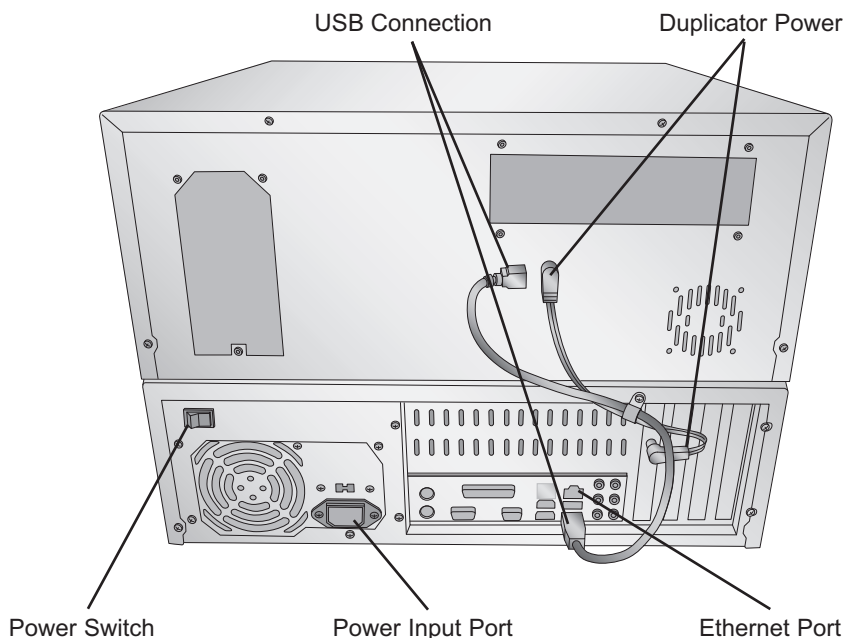
The **Cover Lock** allows you to lock the unit to prevent access to the blank discs and cartridges.

The **Ink Cartridge Carrier** holds the color and black ink cartridges.

The **LCD Control Panel** displays errors and warnings, allows you to perform administrative functions and run archived jobs.

The **CPU** is a computer inside the bottom portion of the unit and runs all the software necessary to publish discs.

## Rear Panel





The **Power Input Port** connects to the included power cable. The internal power supply is a switching 100V~240V power supply.

The **Power Switch** shuts off all power to the unit.

The **Ethernet Port** connects with the cable included to your network.

**Please Note:** *The equipment's Ethernet connection is intended for indoor connection only. Do not connect to an outdoor cable system.*

The **USB Connection** is connected at the factory and should not be removed.

The **Duplicator Power** connection is connected at the factory and should not be removed.

# Section 2: Hardware and Software Setup

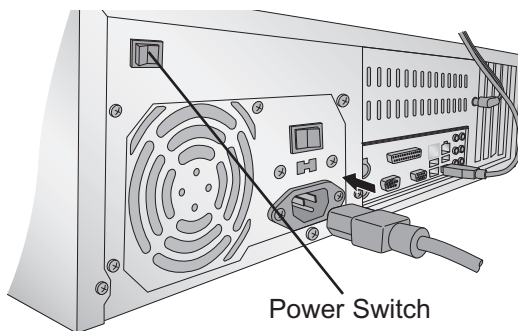
## Setup

This section will describe the step-by-step process of setting up your unit. This includes information on how to load the supplies (ink and disc media) necessary to start producing discs.


### A. HARDWARE SETUP

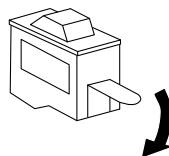
#### Step 1: Applying Power

- Locate the power cord supplied with the unit.
- Place one end of the power cord into the plug on the back of the unit and the other end into a surge protected outlet.
- Turn on the power switch located on the back of the unit above the fan.
- Unit will initialize for approximately 60 seconds.



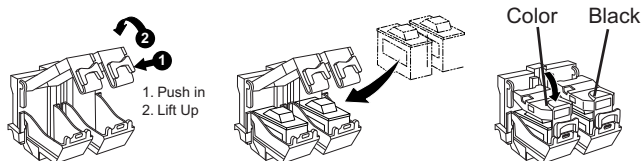
#### Step 2: Installing Ink Cartridges

- Using the LCD Control Panel access the Main Menu of the XRn by pressing the  button. Choose "Install Cartridges"
- Using the key provided, open the front cover of the unit. The cartridge carrier will move to the load position.
- Open the ink cartridge covers.
- Remove the ink cartridge from its packaging.
- Slowly remove the tape covering the cartridge's print head, being careful to avoid damaging the barcode label on the underside of the cartridge.



### **DO NOT TOUCH THE COPPER AREA!**

- Insert the ink cartridges into the carrier, copper end first and snap the cartridge cover in place. Insert the color in



the left holder, monochrome black in the right cartridge holder.

- Close and lock the unit's front cover.

**Note:** *The unit will not function unless the front cover is closed and locked! Both LED lights inside the cover will be lit when the cover is locked and closed.*

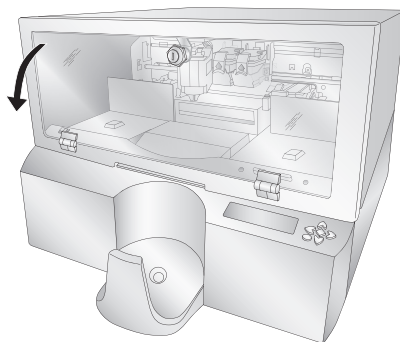
Finally, you must tell the XRn which cartridge was installed by selecting it using the LCD Control Panel. Choose new color, new black, new color and black or used cartridge. Choose used cartridge if you have installed the same cartridges. Choosing used cartridge will retain the current ink level values. Choosing new cartridge will reset the appropriate ink level(s) to 100%.

### **Step 3: Loading Media (Discs)**

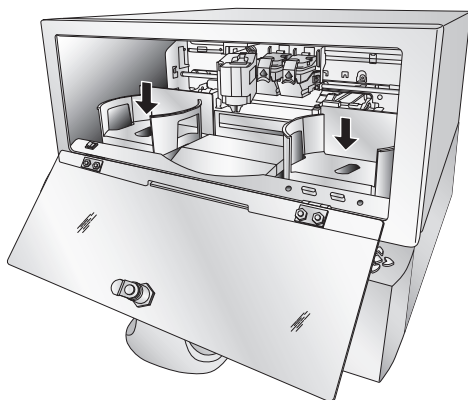
**NOTE:** *Your Printer can print directly onto virtually any brand of printable-surface CD/DVD media. However, different brands of discs have different printable coatings. Because of this, you may need to adjust the printer driver settings to accommodate your specific brand of CD/DVD media. Refer to Section 4 for further printer driver information.*

*For maximum print quality, use CD/DVD media authorized by Primera.*

Refer to the following steps when loading discs in to the unit:



- Using the key provided, open the front cover of the unit.
- The Printer will automatically position the cartridge carrier and Robotic Disc Transporter to the center position

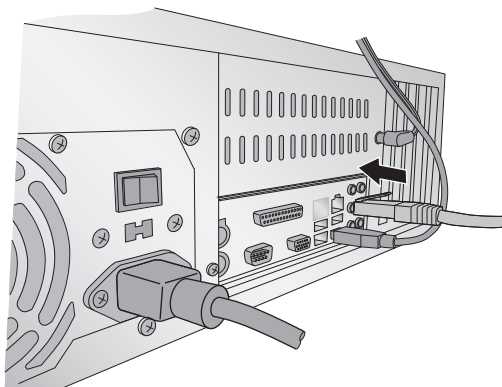


allowing for easy access to the bins.

- Load the right and left bins with CDs, DVDs, DVD-DL or a combination. (Each bin can hold only one type of media)  
Note the type of media that you are loading in each bin. You can add this information to the description of the unit using the Administrator Utility. If you are mixing media types you must enable bin selection using the Administrator Utility. See Section 4A of the users manual for more information about the Administrator Utility.

#### **Step 4: Connect the Ethernet Cable**

Connect the unit to the 10/100 or Gigabit Ethernet port with the provided ethernet cable. The XRn will appear on your network as XRn-xxxxx where xxxxx is a number between 00001 and 99999.

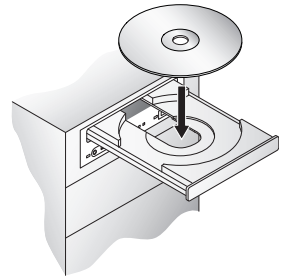


---

## B. INSTALL THE PTPUBLISHER CLIENT SOFTWARE

Place the Installer CD in the client computer's CD/DVD Drive. The Installer application will automatically launch in a few moments.

Click **Install Client** to begin the installation. By default, any computer with the PTPublisher Client software will be allowed to send jobs to the XRn. This setting can be edited using the Administrator Utility.

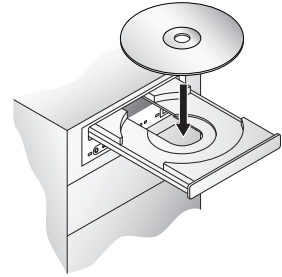


**Note:** *If the Installer does not start, open My Computer on your desktop. Double-click the icon of the appropriate CD/DVD drive containing the Software Installer disc. Double-click **Installer.exe**.*

---

## C. INSTALLING THE ADMINISTRATOR UTILITY (OPTIONAL)

Install the Administrator Utility only for users who will need to change XRn system settings such as adding/removing authorized users, bin/media designation, viewing system logs, deleting archived jobs and designation users to be notified of system errors/warnings. Place the Installer CD in the client computer's CD/DVD Drive. The Installer application will automatically launch in a few moments.



Click **Install Administrator Utility** to begin the installation. See Section 4A for more information about the Administrator Utility.

---

## D. CONFIGURING YOUR NETWORK


The XRn has the Guest account enabled by default. This allows for easy and immediate use of the unit. However, this may not be the most secure practice and may violate some network administrator security policies.

**Note:** *If you add this unit to your network domain it is highly recommended that you disable the guest account on the XRn.*

To disable the Guest account follow this procedure:

1. From any computer that can access the XRn, open a remote desktop connection. Go to Start - All Programs - Remote Desktop Connection.

**Note:** *You may also hook up a monitor and keyboard to the XRn to gain access. If this is the case, skip to step 4.*

2. In the window that appears type the name of the XRn. This information can most easily be found on the XRn itself by pressing the  button at the main menu of the LCD Control Panel. The name will be in the following format: XRn-xxxxx where xxxxx equals a number between 0001 and 99999.
3. Click **Connect**.
4. You will be prompted for a username and password. Enter the following to access the Administrator account:  
Username: XRnAdmin  
Password: NetworkDP1  
You now have full access to the XRn computer
5. Go to User Accounts
6. Click **XRnGuest**
7. Select turn off guest account.

You will now need to add the XRn to a workgroup or to a domain so that users will be able to send jobs to it. Workgroups are typically found on smaller networks. Domains are found on medium to large networks. If you don't know what either of these are and you don't have a network administrator then you probably will want to add the XRn to a workgroup. Follow the instructions below to add the XRn to a work group.

1. Right click on the My Computer Icon on your desktop
2. Click on the **Computer Name** tab.
3. In the Workgroup box type the name of the existing workgroup. To find the name of the workgroup, perform this same three step procedure on an existing computer. The workgroup name should already be populated. Use this same name for the XRn.

If you have a domain, ask your network administrator to add the XRn to the domain using the same procedure they would use to add any other new computer.

## Section 3: Sending Jobs to the XRn

### A. TUTORIAL: COPY A CD OR DVD

Copy CD or Copy DVD can be used to copy any CD or DVD master. This project reads the master disc from your computer's drive to the hard drive of the XRn computer. The master is stored in the Global Image format (\*.gi) in a temporary location on the XRn. The XRn uses this temporary file to make all subsequent copies that are requested. The master disc is read only once to create the initial temporary file.

Recommended for: All CD, DVD or BDR types (Audio CD, Data CD, Software Install Disc, Video CD, DVD, DVD-ROM, DVD+/-DL, etc.). This is best used for single runs where you will not need to make additional copies of the master disc a later time.

1. Select Copy Project from the Starter Window or the New Project Panel. A Copy Project sub menu will be displayed. Choose Copy CD or Copy DVD. Step one of the Copy Disc wizard will be displayed.
2. You will be prompted to place the disc you would like to copy into the drive inside your computer. The tray door will open automatically. Place the disc in the drive and click **OK**.



3. The XRn will close the drive and read the contents of the disc. It will display disc type (CD/DVD) and show the size of the disc in Megabytes. Verify this information is correct and click the next arrow to continue.



4. Select the print label file by clicking the select a label button. When you have selected print label file, click the next arrow. There are several ways to select a print file. See the explanations below for more information.



For any job type you choose you will be prompted to select a label file to print. You may select an existing label, create a label or choose to print nothing. Simply click the next arrow to print nothing on the disc. Otherwise follow the steps below.



#### 4A. Select a Label

4A1 - Click the **Select a Label** button to open a browse window to choose your print file. Use the Favorites, Browse or Find Tabs on the bottom of the left pane to find the print file or click the **Look In** drop down to find the file.



4A2 - Double Click on the file to add it to your project. You may add any BMP, JPG or SureThing (.std) file. SureThing files are automatically formatted correctly. BMP or JPG files should be 4.72" x 4.72" square. For best print quality the image resolution should be atleast 300 dpi.

Use the tabs on the top left to browse in explorer mode or search for files. Below is a description of each of the search types.



**Locations.** Click on the Locations tab to display favorite locations such as Desktop, My Documents or My Computer.

**Browse.** Click on the Browse tab to display files in tree view on the left side of the screen. Open and close folders by clicking the + or - next to each folder. Click on the folder to view the contents on the right side of the window.

**Find.** Click on the Find tab to search for print label files. Type in all or part of a file name to search for any picture file that matches. All JPG, BMP, GIF, PNG, TIF files matching the typed criteria will be displayed. Use the \* modifier to search for specific file types such as \*.jpg or \*.std to search for all files ending those specific extensions.

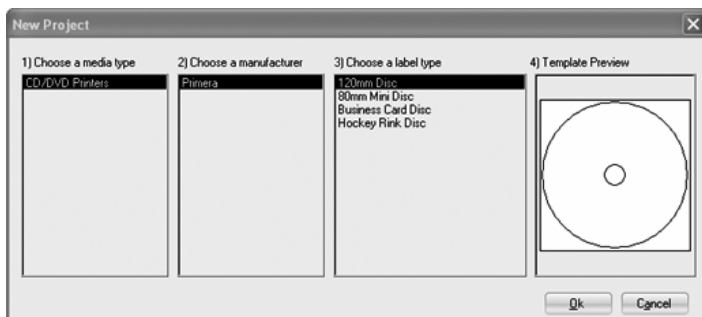


#### 4B. Create a Label

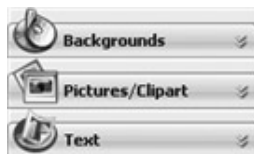
4B1 - Click the **Create a Label** button to open the SureThing CD Labler program. This program will allow you create a label.



Choose the 120mm DiscTemplate from the window that appears.



Using the buttons on the left navigation window, you may add your own background, choose a pre-made background, choose from several text effects or insert a picture. Click the down arrow on the button to view all options. Once you have designed the label go to the file menu and choose save.



4B2 - Close the SureThing program. A message will appear asking if you would like to use the SureThing file you just created in your project. Click **Yes** to use it in your project. Once you choose your label a preview will be

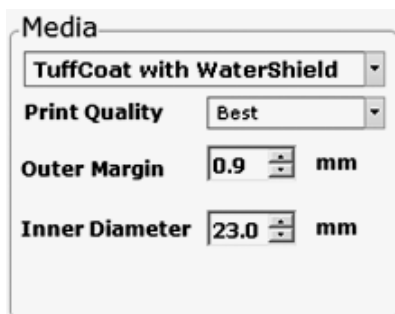


displayed.

5. You can edit the print settings for this file by changing the settings that appear.

Several preset media types that correspond with the media available at our webstore are available from the Media drop down box.

When you select a media type from this box the Print Quality, Outer Margin and Inner Diameter are automatically adjusted to fit that media.



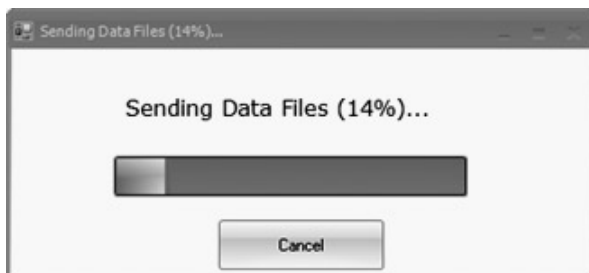
The image shows a 'Media' settings dialog box. It has a title bar 'Media'. Below the title bar is a dropdown menu currently set to 'TuffCoat with WaterShield'. Below that are three settings: 'Print Quality' with a dropdown set to 'Best', 'Outer Margin' with a numeric input set to '0.9' and a unit dropdown set to 'mm', and 'Inner Diameter' with a numeric input set to '23.0' and a unit dropdown set to 'mm'.

If you are not using media sold by Primera you can adjust these settings by changing the quality setting or toggling the size of the printed outer margin or inner diameter. You can save your adjusted settings by clicking the Save button when it appears. You will be prompted to name your custom media settings. This name and the associated settings will now be available to choose in the media drop down box.

6. Verify information on the summary window, choose the number of copies and click **Go**. Click the **More Options** button to set additional options such as recording speed and file system type. If you do not set these options the optimal settings will automatically be selected for you.



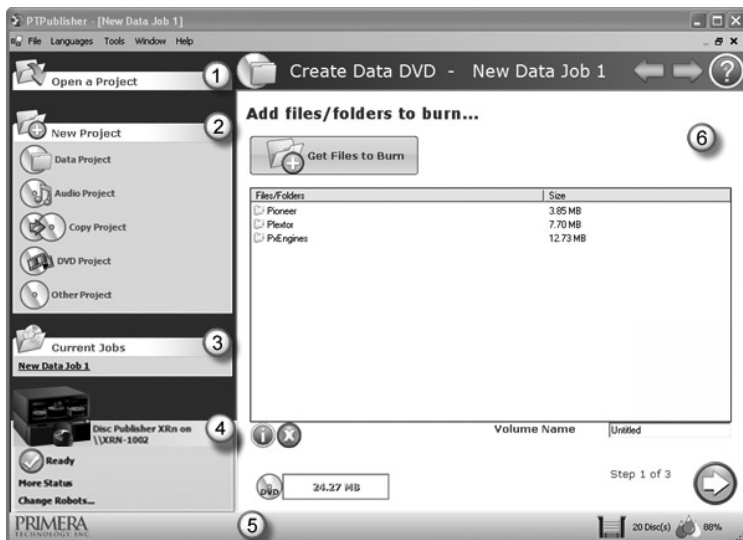
Once the Go button has been pressed the data is sent to the XRn. This process can take a few moments or several minutes depending on the size of your job. A progress window is displayed while the data is being sent to the XRn.




When the job starts the Status window will appear. Here you can view the status of the printer, the robot, and the drive. You can also view a log of all activity or cancel the job while its in progress.

## B. USING PTPUBLISHER

The PTPublisher program is divided into six areas. Refer to the following for a description of each area.



### 1. Open Project Panel

This panel allows you to open a previously saved project. It will also display the last few saved projects. To open or close this or any panel click on the down or up arrow  on the upper right corner of the panel.

### 2. New Project Panel

This panel allows you to create any of the project types available for this robot. Click on the category to open specific project types. This panel is your starting point for any new project.

### 3. Current Projects Panel

This panel displays any project that is running or open. Once you save your project the project name will be displayed here. Click on the project name to open it.

## 4. Robot Status Panel

This panel displays a picture of currently connected robot. The current status is also displayed. Important errors such as low ink will be displayed here. Click "**more status**" to view status regarding the printer, recorder drive, currently running jobs and job history log.

You may also click "Change Robot" to change the robot that this particular job will be submitted to. If you have multiple XRn units on your network or if you also have a local robot they can be selected on the following screen. Simply check the box next to the unit you want. Now click change robot. If the unit you are looking is not on the list, click "Rescan."



## 5. Status Bar

The Status Bar shows key information such as ink levels and media supply levels for the currently selected robot.

## 6. Project Detail Window

This screen changes depending on the selected panel option. It can display project steps such as Adding data and Adding a print file. It can also display robot status. Finally, the support center is displayed here any time you click on the help icon. Navigate through the project steps by clicking the next arrow at the bottom right.



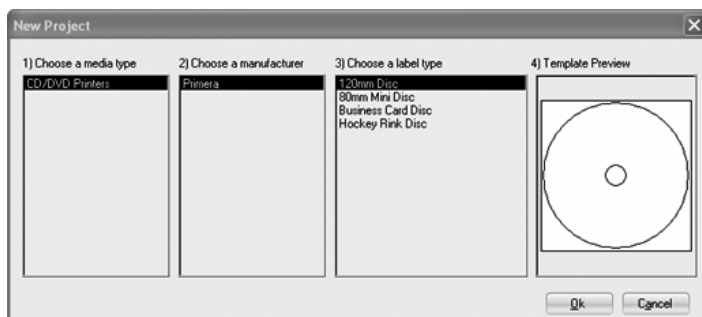
**Support Center.** Help can be accessed at any time by clicking the ? icon. This will open the support center. Depending on where you are when you click the help icon you will be given several common help documents that apply to the screen you are on.

<b>Search our Knowledge Base</b> <input type="text" value="Type here to Search the Knowledgebase..."/>  <b>Search</b>	<b>Technical Support</b> <a href="#"><u>In USA - Via the Web</u></a> <a href="#"><u>In Europe - Via the Web</u></a>
<b>View Help Documentation</b> <a href="#"><u>Open Main Help Page</u></a> <a href="#"><u>Setting up a Data Project</u></a> <a href="#"><u>Setting up an Audio Project</u></a> <a href="#"><u>Setting up a Copy Project</u></a> <a href="#"><u>Setting up a DVD Project</u></a> <a href="#"><u>Setting up Other Projects</u></a> <a href="#"><u>Movie Tutorials for all Projects</u></a>	<b>Support Tools</b>  <b>Create Support Report</b>  <b>Support Quick View</b>  <b>Check for Updates</b>

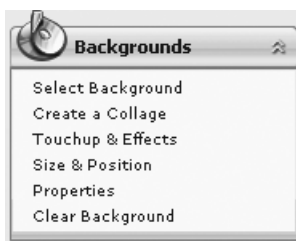
## C. CREATING A PRINT LABEL USING SURETHING

The SureThing Disc Labeler software included with your unit is a great tool for creating professional looking discs. You can use SureThing's Smart Designs to quickly label a disc, or easily import your own design in many popular file formats. The Help section included with the software will provide complete instructions on all the features in this package. (Go to the Help Menu - Choose Contents) The following is a tutorial on creating a basic disc design:

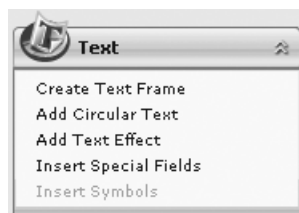
1. Open the SureThing program. Choose the 120mm DiscTemplate from the window that appears.



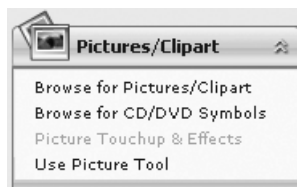
2. Open the background panel by clicking the arrow on the background button. Add your own background to the label by choosing **Select Background**.
- 3A. Browse to the location of your background image. To avoid skewed or blurry printing make sure your image is 120mm square and of sufficient resolution. We recommend 300 dpi.
- 3B. Instead of your own background, you can also choose from several included Surething backgrounds. To choose one of these images click the **SureThing Background** button in the Browse window that appears when you click **Select Background**. Also, you can easily toggle through the backgrounds by using the toggle bar below the label. Backgrounds are controlled by the far left toggle button.



- 4A. Open the text panel by clicking the arrow on the text button. Add text by selecting one of the options below. To create text that follows the curve of the disc choose **Add Circular Text**.



- 4B. You may also choose from several SureThing smart designs. These design templates automatically position your text and use certain text effects to give your label a professional look. You can easily toggle through smart designs by using the middle toggle button on the toggle bar below the label.
5. Finally, Open the picture panel by clicking the arrow on the Pictures/Clipart button. Add any logos, graphics or symbols to the label. These graphics will appear on top of the background image. You can size them appropriately by dragging the corner of the selected graphic.
6. When you have completed design work save your label by choosing Save Project in the Actions panel.



---

## D. USING OTHER GRAPHICS PROGRAMS

While SureThing will handle most labeling needs, other graphics programs can be used if you prefer.

When printing and burning through the PTPublisher software your XRn will support the following additional standard label image file formats: BMP, TIF, JPG, GIF, PNG and PRN. These formats can be exported from most any original graphics format such as Adobe Photoshop or Illustrator.

When creating images in other graphics programs we recommend creating a 4.72 x 4.72 square image that has a 300 dpi resolution.

---

## E. ARCHIVING JOBS ON THE XRn

### Creating an Archived Job.

1. Select any project from the Starter Window or the New Project Panel. A sub-menu will be displayed. Select the appropriate project from the sub menu.
2. Follow steps 2-5 in Section 3A. You will use almost the exact same process for an archived job.



3. On the Summary screen you will notice an Archive Job check box. Check the Archive Job box. Three text fields will appear below the check box. Fill them out with the information requested.

Job Summary

**Burning**  
3 Files/Folders (848.00 KB)

**Printing**  
Bravo II Sunflower.jpg

**Using Robot**  
Disc Publisher XRn on \\XRn-1002 Change Robot

Job Options

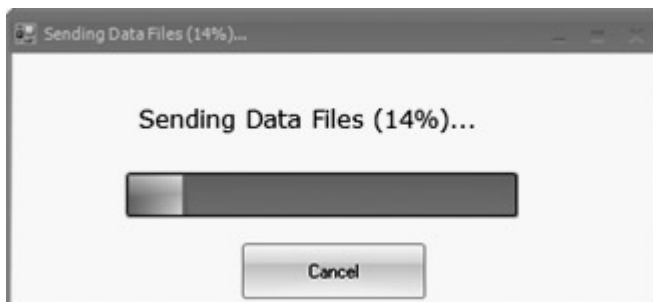
Copies  More Options

☒ Archive Job on the XRn

← Step 3 of 3 GO

4. Click **Go** to start the job.

Once the Go button has been pressed the data is sent to the XRn. This process can take a few moments or several minutes depending on the size of your job. A progress window is displayed while the data is being sent to the XRn.



5. Once the data has been completely transferred to the XRn the archive job screen will be displayed.



6. Choose the name of the job that you submitted and click **Go** again.

**Note:** Archiving Jobs on the XRn takes up hard drive space. Only archive jobs that you perform regularly.

## Accessing an Archived Job.

To access and submit previously archived jobs follow this procedure:

### From the client software

1. Select Other Project from the Starter Window.
2. A sub-menu will be displayed. Choose Archived Job on XRn.

3. The archive job screen will be displayed. Choose the name of the job that you submitted, set the number of copies and click **Go**.



### From the LCD Control Panel

Choose Archived Job from the main menu. Browse the available jobs using the buttons. Select the job with the .

**> Software Disc**  
**Marketing Disc**  
**Music CD**  
**Promotional DVD**

Choose the number of copies using the . By default the original number of copies specified in the archive job is displayed. Press to start the job.

**Software Disc**  
**Copies ( ) 10**  
**Press to Start**

## Section 4: Administrator Utility and Advanced Functions

### A. ADMINISTRATOR UTILITY

Install the administrator utility only for users who will need to change XRn system settings such as adding/ removing authorized users, bin/ media designation, viewing system logs, deleting archived jobs and designation users to be notified of system errors/warnings. For more information about any control in the utility simply hover your mouse over the control to display a Tool tip. The following is a brief description of each section in the Administrator Utility.

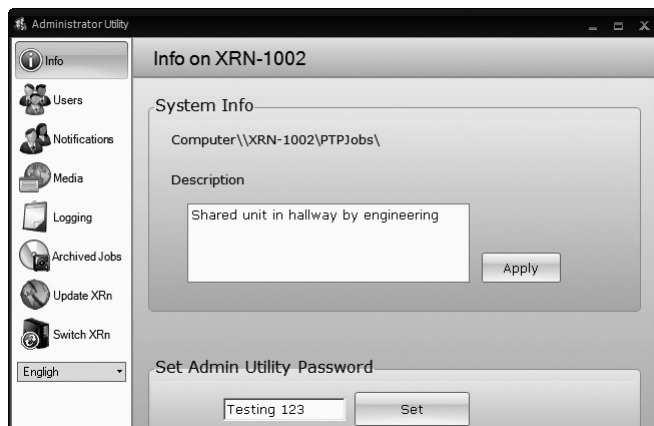
If the Administrator Utility is installed on the computer it can be launched by clicking **Start - All Programs - PTPublisher - Administrator Utility**. You will be prompted for a password.

Administrator Utility Password: AdminUtil1

This is the default password which can be changed on the Info tab in the utility.

#### Info

This section allows you to change the description of the XRn seen by clients and allows you to change the password necessary to log into the Administrator Utility for this XRn. The description could display the XRn location and the media type. Example: Marketing XRn for DVDs and CDs.

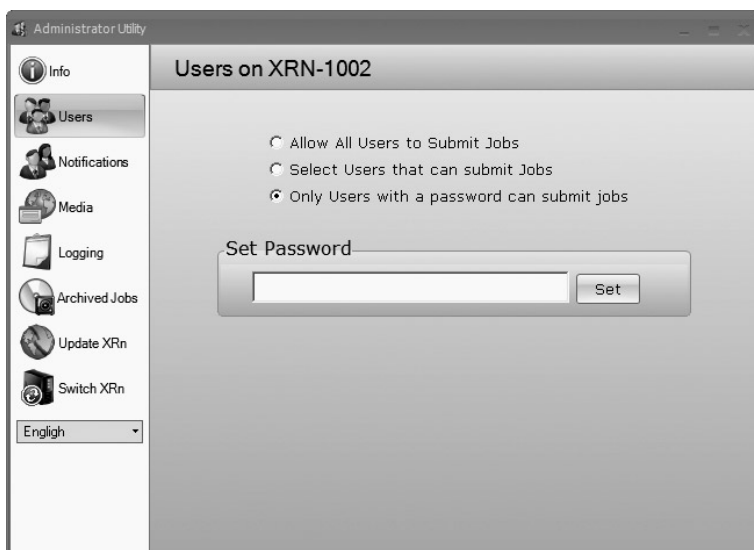


## Users

Manage which users can send jobs to the XRn. There are three methods of user administration. You can choose the one that fits your situation best. The first method is set by default.

1. Allow All Users to Submit Jobs - Any users with PTPublisher installed can submit jobs to the XRn (default).
2. Select Users that can submit Jobs - Only users selected below with PTPublisher installed will be allowed to submit jobs to this XRn.
3. Only Users with a password can submit Jobs - Any user that has PTPublisher installed and knows the password set here and can submit jobs to this XRn.

**Note:** Depending upon which option is selected additional options will appear below.



## Notifications

It is recommend that one or more persons are designated as XRn custodian who is responsible for refilling bins, changing cartridges, and generally making sure that the system is ready for jobs. To help with this responsibility you can create a list of users to notify of system errors or warnings. For each user you can choose what types of events they will be notified for. These settings will be specific to each user that has been selected. For notifications to function, you must enter an email (SMTP) server name in the Global Notifications area.



## Media

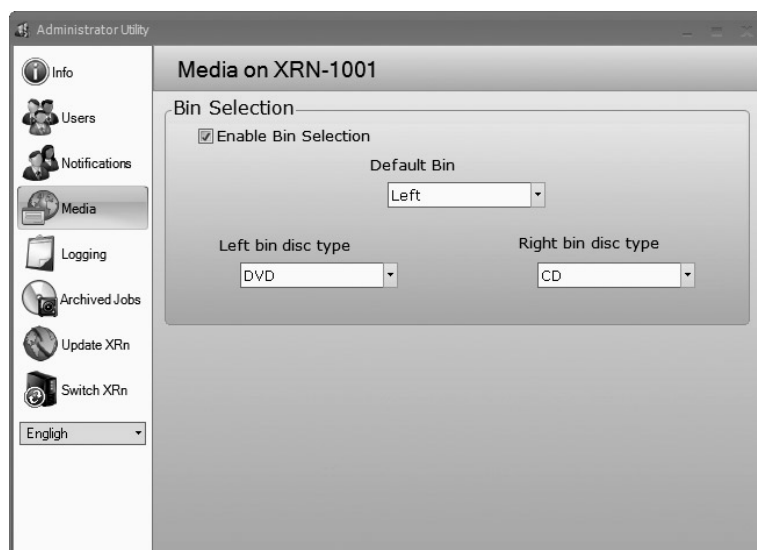
The media window allows you to designate the type of media in each of the bins. By default bin selection is unchecked which means the XRn assumes that the media selected in the PTPublisher client software is actually in the unit. It will pick for this media from the right bin. When bin selection is checked you can set the right or left bin to specific media type. In this way it is possible to have two different media types in the unit at the same time. When one of the two media types is specified in job sent to the XRn from the client software, the XRn will pick for that media at the location specified.

If a job calls for media that has not been designated in the admin utility, the user will be prompted of this fact but will be allowed to send the job anyway. The XRn will then pick from the default bin as specified in this window. Below are a few scenarios that may provide some clarification:

**Scenario One:** The left bin is designated as DVD and the right bin is designated as CD. The user submits a job that requires a DVD. A DVD is picked from the left bin and the job completes.

**Scenario Two:** The left bin is designated as DVD and the right bin is designated as CD. The user submits a job that requires a DVD-DL. The user is prompted that the media is not currently in the XRn. At this point a user can change their media type or ignore the message. If they ignore the XRn will pick from the left bin or whatever bin has been designated as the default. In this scenario it is expected that a user will load the appropriate media before submitting the job. Failure to load the correct media will cause disc rejection and failed job.

**Scenario Three:** Bin Selection has been disabled. The user submits a job that requires a DVD. No prompt is displayed. The XRn automatically picks from the right bin. In this scenario it is expected that a user will load the appropriate media before submitting the job.

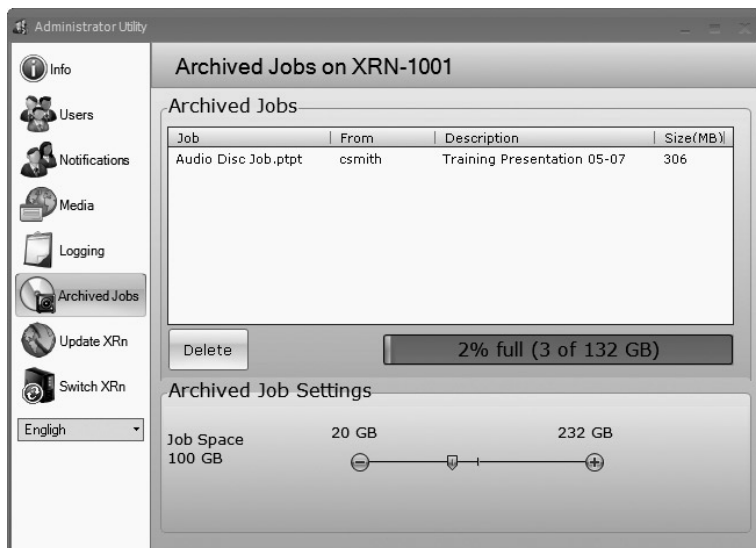


## Logging

View and sort logs for all jobs submitted to the XRn.

## Archived Jobs

View job details or delete jobs that have been archived by users. Using the slide bar at the bottom of the screen you can also adjust the amount spaced reserved for non-archived jobs. This conversely affects space available for archived jobs so that any remaining space can be used for archived jobs. This makes sure that at least 20 GB are always available for normal jobs.



## Update XRn

Check for XRn software updates for the LCD or the Job Service. If updates are available the Update button will be active. Click it to update the XRn software.

## Switch XRn

Click this to open the initial login screen. Choose another XRn from the drop down box. You can use this utility to administer several different XRn. Each XRn has exclusive settings and its own login password.



## B. ADVANCED PRINTER DRIVER SETTINGS

The most popular driver settings such as print quality, inner diameter and outer margin can be modified through the PTPublisher client software. The rest of the settings can be accessed in the following manner.

### Remote Desktop Instructions

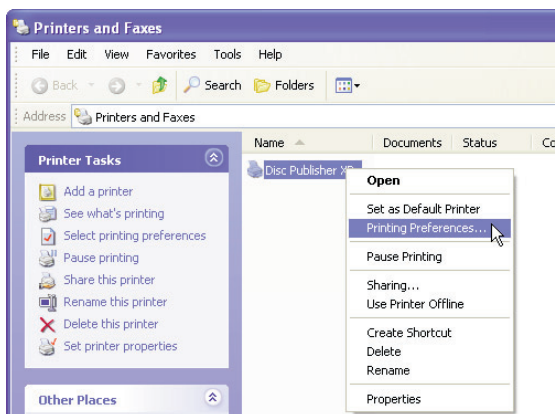
In order to access the printer driver you will need to connect to the XRn via remote desktop. You may also hook up a monitor and keyboard to the XRn to gain access.

1. From any computer that can access the XRn, open a remote desktop connection. Go to Start - All Programs - Remote Desktop Connection.
2. In the window that appears type the name of the XRn. This information can most easily be found on the XRn itself by pressing the X button at the main menu of the LCD Control Panel. The name will be in the following format: XRn-xxxxx where xxxxx equals a number between 0001 and 99999.
3. Click **Connect**.
4. You will be prompted for a username and password. Enter the following to access the Administrator account:  
Username: XRnAdmin  
Password: NetworkDP1  
You now have full access to the XRn computer.

### Accessing Printer Driver Settings

Click the **Start** button. Click on **Printers and Faxes**.

Click on the **Disc Publisher XR** icon with the right mouse button and select **Printing Preferences**.



## Paper Size

This setting is automatically set to CD/DVD from the PTPublisher client software and should not be set on the XRn.

## Resolution

This setting can be set from the PTPublisher client software and should not be set on the XRn.

## Cartridge Type

The **Print Black with Black Cartridge** setting will print discs using both the color and black cartridges. This saves color ink by using just the black cartridge for the black areas of your design. When using this setting, be sure to perform the Alignment Calibration print described later in this section. Please note that the Calibration Alignment will need to be done after installing a new cartridge as alignment may vary from one cartridge to the next. Select **Color** to print using only the color cartridge. The **Monochrome Black** setting prints using the **Monochrome Black** cartridge only.

## Color Matching

Click on the Color Matching down arrow and choose the color matching option that's right for you. Select **None** if you are more interested in print speed rather than color accuracy, if you have already color corrected your image for printing, or if you are using some other third party color matching software.

Select **Algebraic** if you would like the printer driver to make very simple color balance adjustments based on an RGB color model. This option gives you more natural looking images without actually utilizing any specific color matching software.

Select **PrimaColor** to enable color-matching profiles written specifically for the XRn by Candela Color Management System. This setting automatically adjusts the color of your image according to predetermined printer profiles and default system profiles. This results in a very precise color match when attempting to print photographic images.

Select **Z-Color** to use a factory set color matching scheme that is calibrated toward images that have photographic qualities.

## Ink Saturation

This option controls the ink saturation of the printed image. When printing onto the printer manufacturer's TuffCoat CD media, this option can be left at its default setting of 50%.

When printing onto other brands of printable CD media, you may need to adjust this control in order to optimize the ink saturation for the printable surface of your specific CD media. Click on the up and down arrows to change the ink saturation setting. Lower numbers reduce the overall ink saturation, while higher numbers increase it. Please note that higher ink saturation results in higher ink usage. This will reduce the amount of discs produced per cartridge.

## Inner Diameter

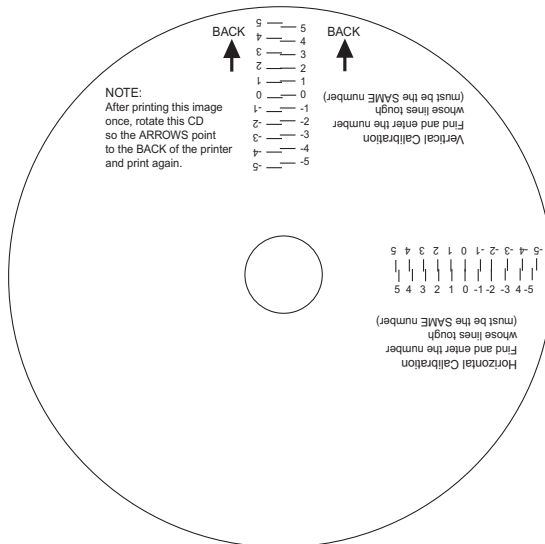
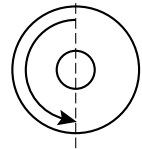
This setting can be set from the PTPublisher client software and should not be set on the XRn.

## Centering Test Print

**NOTE:** Your printer comes from the factory pre-calibrated to print the image in the center of the CD. You can use this adjustment if you need to fine-tune this location.

If you ever wish to verify your factory-calibrated Vertical and Horizontal calibration settings, you can run a simple calibration procedure to assure that your images will be centered when printed on a CD. To do this, refer to the following steps:

1. Verify that a disc and a color ink cartridge are installed in the unit. It is important to use the same disc you normally use for your publishing because different brands of discs may vary slightly in size. Also, verify that the unit is powered **ON** and that it is connected to your computer.
2. Click on the **Centering Properties Test Print** button. The printer will begin printing the calibration test print.
3. When the print is complete, rotate disc 180° and put the disc back in the input bin and repeat step 2 using the same disc.
4. When the second run of the print is complete, you should have a test print that looks something like the following:



5. Along the Vertical axis of the printed disc, find the number whose lines touch. For example, in the above illustration, the number would be 2. Enter that number into the Vertical box of the Calibration window and 0 would be entered for the Horizontal axis.
6. Select the **OK** button. Your images should now be centered when printed on a disc.

After your selections have been made, close out of the printer setup window. You are now ready to go to an application program and print. All printer driver selections will stay the same until you change them.

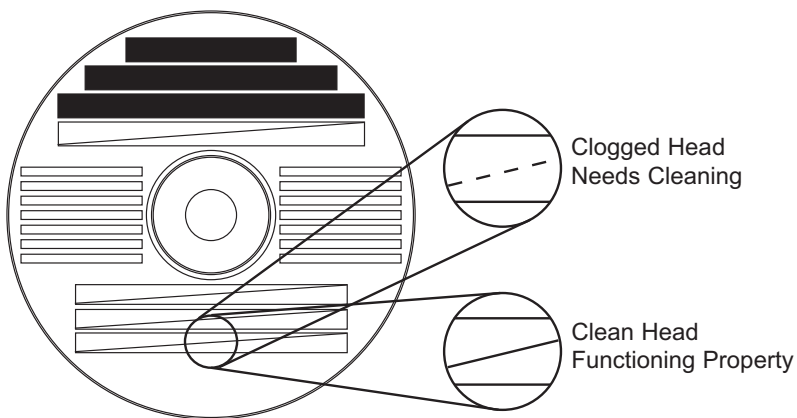
### **Enable Ink Low Warning**

This setting lets you enable or disable the warning from the printer to tell you when the ink cartridges are getting low.

### **Ink Levels and Cartridge Maintenance**

Select this button to display the current ink levels as well as options for cleaning and changing cartridges.

Select **Clean** button to send a simple test pattern to the printer. Be sure to have a disc in the XRn's input bin and the front cover closed. The test pattern, shown below, purges ink through nozzles of your ink cartridge to clear any blockages. The test pattern will show if the nozzles require any further



cleaning.

If the Yellow, Magenta, Cyan or Black diagonal lines printed on the disc show breaks, repeat the cleaning procedure. If nozzles still appear to be clogged, remove the cartridge and gently wipe the nozzle area sideways with a clean water-dampened cloth. If after several cleanings a color still does not appear on the test print, the cartridge may be damaged or empty and may need to be replaced.

Select the **Details** button for information on the drivers,

firmware, alignment and number of discs printed with your unit.

## Disc Output Location

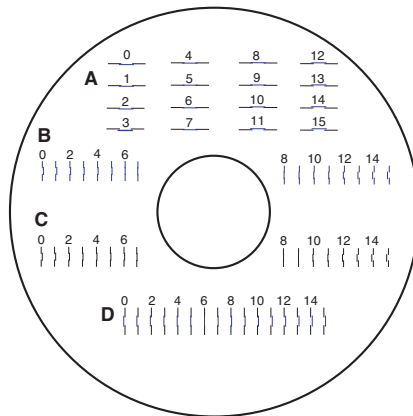
Do not change this setting! It should be left in the Kiosk mode setting.

## Enable Bi-di Printing

When enabled the XRn will print bi-directional for faster printing. The default is uni-directional printing. When you enable bi-directional printing, you should perform the Alignment Calibration described later in this section. Please note that the calibration is stored on your computer, so if you move to a new computer you must repeat the calibration.



## Alignment Calibration



The Alignment Calibration allows you to create a test print that will provide you with values to configure your printer for Bi-Di- Printing and to align the color and black cartridges for Color+Black printing. If Bi-Di Printing is enabled, or if you use Color+Black as a cartridge type in the driver settings, it is important to perform this calibration *every time you change a cartridge*. To print, click the **Alignment Calibration Properties** button then click **Yes..** The print will look like this:




## C. LCD CONTROL PANEL OPERATION

Using the LCD Control Panel you can change the cartridge(s), run archived jobs, access utilities, restart the system or view errors and warnings. Below is a description of the basic operation and a description of the menus.

Press   to browse through the menus.

Press  or  to select a function.

Press  to return to the previous menu.

Press  to return to the Idle or Busy status screen at any time.




### Idle Status Screen

By default the Status screen is displayed. This screen displays the current ink levels. Press  to display the Main Menu.

**XRn Disc Publisher**

**Ink: C=97% B=100%**

**\*\*\*Ready!\*\*\***

**Press  for Menu**


### Busy Status Screen

While the XRn is busy with a job the status screen changes to include the number of jobs and the number of disc remaining before the unit becomes idle again. Just because the unit is busy doesn't mean a job can't be received. If a job is received it will simply be queued.

**Job Remaining: 1**


**Disc Remaining: 1**

**Ink: C=97% B=100%**

**Press  for Menu**






## Main Menu




The Main Menu allows access to all of the functions of the LCD Control Panel. Press the  to select the function.




**> Archived Jobs**  
**Install Cartridges**  
**Tools**  
**Shutdown / Re-start**

## Archived Jobs

The Archived Jobs function allows access to any of the archived jobs stored on the unit. If no jobs are stored this screen will be empty. Browse the available jobs using the   buttons. Select the job with the .

**> Software Disc**  
**Marketing Disc**  
**Music CD**  
**Promotional DVD**

Choose the number of copies using the   . By default the original number of copies specified in the archive job is displayed. Press  to start the job.


**Software Disc**  
**Copies (  ): 10**  
**Press  to Start**

## Install Cartridges

This function allows you to change the color, black or both cartridges. See Section 2 - Step 2 for the complete cartridge change procedure. Once the cartridges has been installed you must tell the XRn which cartridge was installed by selecting it using the LCD Control Panel. Choose new color, new black, new color and black or used cartridge. Choose used cartridge if you have installed the same cartridges. Choosing used cartridge will retain the current ink level value. Choosing new cartridge will reset the appropriate ink levels to 100%.

**> New Color / Black**  
**New Color only**  
**New Black only**  
**Used cartridges**

## Tools

The tools menu allows access to the following administrative function. Use the  to select a function.

**> Printer Operations**  
**About**  
**Reset PTP Service**

**Printer Operations** - Allows access to clean print and other printer maintenance.

**About** - Displays version information.

**Reset PTP Service** - Starts and stops job processing service. This will correct some problems with the unit and is faster than restarting the XRn.


## Shutdown/Re-start

Selecting this function will display a sub menu that allows you to shutdown or restart the XRn. Shutdown will cut power to the entire unit. This will require you power the unit back on using the power switch in the back. Restart will shutdown unit and immediately turn the unit back on.



## Cancelling Jobs

When Jobs are running you may cancel them from the LCD Control Panel.

The Busy status screen is displayed when jobs are in progress. Press the  to access the cancel jobs sub-menu.


**Jobs Remaining: 1**  
**Discs Remaining: 2**  
**Ink: C=100% B=100%**  
**Press  for Menu**

**> Main Menu**  
**Cancel Jobs**

Use the  to move the cursor down to "Cancel Jobs". Press the  to select. A list of jobs currently running and an option to "Cancel All Jobs" will be displayed.

**> Cancel All Jobs**  
**Software Disc**  
**Marketing Disc**

Press the  to select. A confirmation screen will be displayed.

**Confirm cancel of:**  
**All Jobs**  
**Press  to confirm**

The Idle Status screen will be displayed when the jobs have been canceled.

***Important notes:***

- The LCD goes into power save mode after 90 minutes of non-use. This means the screen becomes very dim. Simply press any button to return the brightness level to normal.
- The LCD screen will automatically revert to the Idle or Busy Status screen after 30 seconds of non-use.

# Section 5: Maintenance and Troubleshooting

## A. LCD ERROR MESSAGES

There are several error messages or warnings that will appear on the LCD Display. Below is a descriptions of each and their possible solutions.

### **Input Empty.**

The left or right bin is out of discs. Add the discs specified in the control panel. The LCD will only show you which discs to load if bin selection has been enabled. (See 4A for more information on bin selection). If bin selection is disabled, the LCD will display a generic input empty error. In this case it is up to the user to know which type of media to load into the unit.

#### **INPUT EMPTY**

**Add these discs -**

**Left Bin: DVD-R**

**Right Bin: CD-R**

### **Ink Low**

When Ink levels reach approximately 10% a warning will be displayed. You can either change the cartridge or ignore the warning and continue printing. If you choose to ignore, it is possible that discs will be printed with insufficient ink which will cause poor print quality.

#### **INK LOW**

**CARTRIDGE: COLOR**

**Press  to change**

**Press  to ignore**

## B. CLEANING THE XRn



Use a clean, lint-free rag with a small amount of ammonia window cleaner to clean the XRn's outside case and trays. This type of cleaner is very effective on inks that may accumulate on the printer tray. Stronger cleaning solutions are NOT recommended because they may damage the paint and plastic materials from which the parts are manufactured.

Always disconnect the XRn's power cords before cleaning. Resume operation only after the surfaces are completely dry.

---

## C. PERFORMING A ROBOTIC SELF-TEST

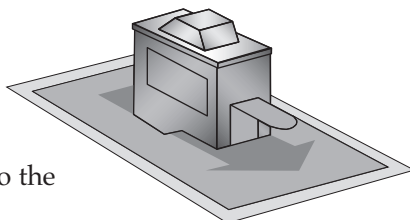
To ensure that everything is working properly, a Self-Test feature is built in to your unit. In this mode, the Robotic Disc Transporter will go through the motions of picking and placing a disc to ensure proper working order. Perform the test by doing the following steps:

- Load some discs into the Right Bin
- The cover must be closed for this operation to complete. However, in order to access the buttons you must open the cover. To get around this problem simulate closing the cover by activating the cover lock sensor. You may do this by putting an object such as a folded piece of paper in the slot where the lock would normally be located.
- With the unit turned on, press the Cartridge Button 
- While holding the Cartridge Button, press the Power Button  until the robotics start to move.
- Release both buttons
- To stop the test, wait until the disc has moved to the Right Bin and press the Power Button.

## D. CLEANING THE INK CARTRIDGES

It may be necessary to clean the ink cartridge nozzles if you notice reduced print quality, or if you suspect an cartridge nozzle has become slightly dried out or clogged. If you are having print quality problems, follow the steps below:

1. Remove the print cartridges.
2. Moisten a lint-free cloth with water.
3. Hold the cloth against the nozzles for three seconds. This will “wick” some additional ink onto the damp cloth.
4. Wipe in the direction shown.
5. Repeat the process.



## E. TECHNICAL SUPPORT

If you have difficulties in operating the unit use the procedures in this manual and the additional resource listed below:

Source	Location
Primera Knowledge Base	<a href="http://www.primera.com/knowledgebase.html">www.primera.com/knowledgebase.html</a>
PTPublisher Software Help files	Open the software. Click on the ? Icon
SureThing Software Help files	Open the software. Click on the Help Menu - Contents
Email Support	<a href="http://www.primera.com/contact_tech_support.cfm">www.primera.com/contact_tech_support.cfm</a>
Chat Support	<a href="http://www.primera.com/knowledgebase.html">www.primera.com/knowledgebase.html</a>
Phone Support	763-475-6669 (Mon - Fri 8 a.m. - 7 p.m CST)

## Section 6: Technical Specifications

Model	XRn Network Publisher
Printing Method	Ink-Jet
Processor	Celeron D 2.93 GHz
Memory	1GB
Hard Drive	250 GB SATA
Printing Resolution	4800 x 1200 dpi, 2400 x 1200 dpi, 1200 x 1200 dpi, 600 x 600 dpi
Ink Types	Dual Cartridges: One 3-color (CMY) cartridge, and one Black Monochrome (K)
Media Types	CD-R, CD-RW, DVD-R, DVD+R, DVD-DL, DVD+DL, DVD-RW, DVD+RW, DVD-RAM, BDR, BDR-DL (Must have a Blu-ray drive to record to BDR formats)
Maximum print width	4.724" (120mm)
Disc Capacity	25 right input, 25 left input, 50 discs total
Interface	Gigabit Ethernet
Operating Temperature	60-80F (15.5 - 26.5C)
Power Requirement	100-240VAC, 50/60Hz, 1.5A
Weight	49 lbs. (22.23 kg)
Dimensions	17"W x 13"H x 22.11"D (43.3 cm W x 33.02 cm H x 56.16 cm D)
Certifications	Emissions: FCC Class A, CE
Safety	UL, UL-C, CE
Warranty	One year return-to-depot



# Index

Administrator .....	9, 10
Alignment Calibration.....	30, 35
Archived Job .....	20, 22, 28, 37
Bin selection .....	8, 26, 27, 41
BMP .....	12, 13, 20
Cancelling Jobs.....	39
Cartridge Type .....	30
Centering Test Print.....	32
Change Robot .....	17
Cleaning the Ink Cartridges .....	43
Cleaning the XRn .....	42
Color Matching.....	31
Create a Label .....	13
Description of XRn .....	24
Guest Account .....	9, 10
Inner Diameter .....	15, 31
Install Cartridges .....	6, 38
JPG .....	12, 13, 20
LCD, Busy Status Screen .....	36
LCD, Idle Status Screen.....	36
LCD Error Messages .....	41
Logging .....	28
Media designation.....	9, 24
Notifications.....	26
Outer Margin .....	15
Print Quality .....	7, 12, 15, 29
Robot Status Panel.....	17
Self-Test.....	42
Technical Support .....	43
TIF .....	13, 20
Updates .....	28







