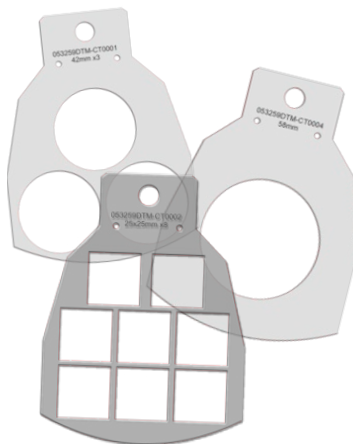


Eddie Carousel Trays



Scan the QR Code to watch the Eddie Carousel Tray instruction video or follow the instructions below.

Subscribe to our YouTube channel to get the latest updates, tips & tricks

Visit dtm-print.eu/download

Go to "Food Printer", navigate to "Eddie Edible Ink Printer" and download the required **Eddie Carousel Tray Template**.

Open the template. Now import and place your design.

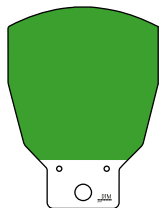
Place your trays into the carousel and load your food items, adjust the settings and start printing.

Eddie Trays Assembly



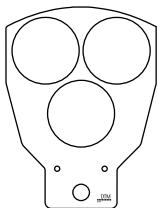
ATTENTION: It is not necessary to unscrew the **CT0000** tray as there is no protective film on the trays.

Base Tray
12x or 6x

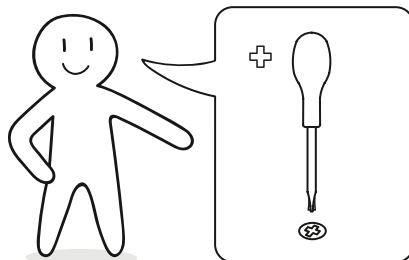


Tray
12x or 6x

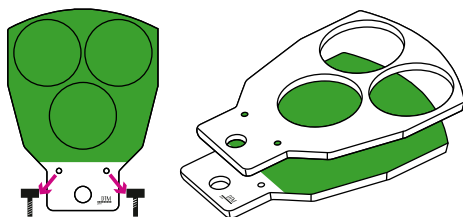
CT00xx



Screws
24x or 12x

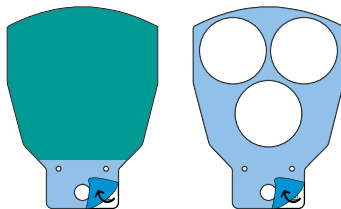


1 Unscrew the trays

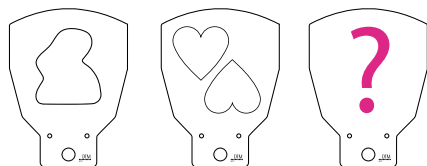


2 Remove the protection film & screw the trays back together

Attention: Don't tighten the screws too tightly, otherwise the tray may break



? You need a custom tray?



To order your custom tray scan the QR code or visit dtm-shop.eu.

Each tray is produced on food & dishwasher safe plexiglass.

